



FranklinPierce  
UNIVERSITY



# The Rindge Connection

Volume 6, Issue 1 • September & October 2010

## Mission

The mission of The Rindge Connection is to integrate and engage Rindge residents, the Rindge business community and Franklin Pierce University in a positive and informative way.

## Franklin Pierce University's Fitzwater Center and the Monadnock Ledger-Transcript Co-Sponsored The Monadnock Debates

By Patricia Garrity



Photo Credit/Ryan E. Hulse

Candidates address a packed audience in Franklin Pierce University's Pierce Hall. (Starting on left) Jennifer Horn, Wesley M. Sonner Jr., Robert J. Giuda and Charles Bass.

The Fitzwater Center for Communication at Franklin Pierce University and the Monadnock Ledger-Transcript co-sponsored The Monadnock Debates, a citizen-driven forum with candidates from both political parties addressing critical issues. These key congressional and senate debates will help shape the race for New Hampshire's 2nd Congressional District and United States Senate. The Fitzwater Center for Communication at Franklin Pierce University hosted The Monadnock Debates in Pierce Hall on the Rindge campus.

The first debate was held on Tuesday, Aug. 17 between Republican candidates for the Congressional District II, Charles Bass of Peterborough, Robert J. Giuda of Warren, Jennifer Horn of Nashua and Wesley M. Sonner Jr. of Mont Vernon.

Democratic candidates for the Congressional District II seat, Katrina Swett of Bow and Ann McClane Kuster of Hopkinton, squared off in the second debate on Tuesday, Aug. 24. The incumbent, Democrat Paul Hodes, is running unopposed for the Democratic nomination for the United States Senate seat. This race was recently identified by CNN as one of the hottest in the country.

The third and final debate of the primary season was held on Tuesday, Aug. 31 between Republican Candidates for the United States Senate seat being vacated by Senator Judd Gregg. The candidates participating were Kelly Ayotte, former Attorney General of the State of New Hampshire, of Nashua, Jim Bender of Hollis, Bill Binnie of Rye, Dennis Lamare of Lee and Ovide Lamontagne of Manchester.

David Tower, attorney and moderator for the Town of Rindge, served as moderator for the debates.

Franklin Pierce University is a private, regionally accredited university grounded in the liberal arts, with a focus on personal attention and high-quality instruction. The University consists of the College at Rindge and the College of Graduate & Professional Studies. Degrees are offered through the doctoral level. The Marlin Fitzwater Center for Communication at Franklin Pierce University was established in 2002 as an academic institute dedicated to preparing young men and women to be politically-engaged Leaders of Conscience in their studies and professions.

The Monadnock Ledger-Transcript, an award-winning twice-weekly newspaper based in Peterborough, N.H., covers 16 towns in the Monadnock region.

## Chamber Business Spotlight: Timeless Home Consignments Under New Ownership

by Annette Williams

Timeless Home Consignments, LLC came under new ownership on July 1, 2010. Annette Williams has purchased the business from Julie Skinner-Brown.

The shop will continue to offer customers the gently used furniture, home décor and home goods for bargain prices. There will be some additions: a new look, new gift and home décor items to provide a wider selection for our customer to choose from. Another addition is our guest book. Our customers can sign their name and leave their e-mail or home address and receive an invitation to our "Sneak Preview" nights. These events will be held to showcase seasonal and holiday items.

Timeless Home Consignments, LLC celebrated its Grand Re-Opening on Friday, July 9.

The shop hours are:

Monday - 10 a.m. to 6 p.m.  
Tuesday - closed  
Wednesday - 10 a.m. to 6 p.m.

Thursday - 10 a.m. to 8 p.m.  
Friday - 10 a.m. to 8 p.m.  
Saturday - 10 a.m. to 8 p.m.  
Sunday - 10 a.m. to 4 p.m.

We look forward to meeting all of the present consignors and hopes they will continue their relationship with Timeless Home Consignments, LLC. We also welcome new consignors to come join us in making this venture a success for all.

With more special events to come, please come in and visit us at:

Timeless Home Consignments  
23 Main Street, Suite 1  
Jaffrey, NH 03452  
(603) 532-4991

Annette Williams is owner of Timeless Home Consignments, LLC.

Timeless Home Consignments will host a Business After Hours event for the Rindge Chamber on Tuesday, Sept. 21 from 5:30 p.m. to 7 p.m. Please join fellow chamber members for networking and refreshments. The event is free. Please respond by contacting the chamber at [info@rindgechamber.org](mailto:info@rindgechamber.org) or by calling 899-5051.



New Rocky the Raven unveiling! Look inside for more details.

The Rindge Connection  
PO Box 911  
Rindge, NH 03461

**POSTAL PATRON**

PRST STD  
ECRWSS  
US POSTAGE  
PAID  
PERMIT #9  
Rindge, NH

# The Rindge Connection Celebrates Its 4th Season!

by Carlotta Lilback Pini

In 2007, representatives from the Town, Franklin Pierce University, and the Chamber of Commerce began discussing the idea of a collaborative newsletter. Town officials wanted to notify the public about important events, inform residents about town services, and improve town wide communication. University officials saw a need to update the townspeople about happenings on campus, share the achievements of students and faculty, and integrate the university with the community it calls home. The Chamber wanted to promote its members' businesses and publicize Chamber events.

After months of discussion and planning, the first publication of the Rindge Connection was published in the fall of 2007. The citizens of Rindge seemed to appreciate the publication and that positive reinforcement inspired the Newsletter Committee to publish another issue, and another...until here we are—nearly three years later!

Over the years, we have made relatively few changes to the newsletter. We have never lacked in content, but have occasionally lacked advertising revenues to cover the layout, printing, and postage required for its publication. The Newsletter Committee investigated various options to reduce the publication cost and recently concluded that publishing fewer issues would be most beneficial. This season, we will publish bi-monthly and add an online component to the Connection-- a Facebook page.

Our thanks go out to all of the advertisers, the contributors, the readers, and anyone else who has contributed to this effort. We feel that the Rindge Connection achieves what each of the three entities involved wanted it to, and hope you agree. Please feel free to contact me with your thoughts about the Rindge Connection, by phone at 899-5181 x101 or email cpini@town.rindge.nh.us

The mission of the Rindge Connection is to integrate and engage Rindge residents, the Rindge business community and Franklin Pierce University in a positive and informative way.

Carlotta Lilback Pini is Town Administrator for the Town of Rindge.

## Taking Care of a Family Member? Get the Toolkit!

by Susan Ashworth

This September, Home Healthcare, Hospice and Community Services (HCS) in collaboration with Pheasant Wood Care & Rehabilitation Center will offer a "Tool Kit for Caregivers" Workshop for family members taking care of loved ones. The free workshop series will be held on Wednesdays, Sept. 15, 22 and 29 from 5:30 p.m. to 7 p.m. at Pheasant Wood Care & Rehabilitation Center located at 50 Pheasant Road in Peterborough.

A different care giving topic will be covered each week. Topics will include practical tips on managing medications, giving personal care, preventing falls, community resources, and caring for those with Alzheimer's disease. All instructors will be nurses and rehabilitation therapists with extensive home care and geriatric care experience.

The workshop series is free, but reservations are necessary by Friday, Sept. 10. Call Home Healthcare, Hospice and Community Services, a United Way agency at 532-8353 and ask for Lynn Robbins, community liaison, for more information and reservations.

Home Healthcare, Hospice and Community Services is a not-for-profit home care and hospice agency serving the region, with an HCS office on 19 Community Lane in Peterborough.

Pheasant Wood Care and Rehabilitation Center in Peterborough provides short-term rehabilitation services, long term care and a specialized Alzheimer's/Dementia program.

Susan Ashworth is Director of Community Relations for Home Healthcare, Hospice and Community Services

## Hospice at HCS Volunteer Training

by Susan Ashworth

Hospice at HCS is offering a training program beginning in September for those who are interested in becoming volunteers. The training will begin on Sept. 7 and continue on Tuesday afternoons from 1 p.m. to 4:30 p.m. through Oct. 26.

Topics such as grief and bereavement, the spiritual aspects of dying, communication skills, care for the caregiver and family dynamics are covered as part of the 27 hour training. Volunteers are members of the hospice care team, providing support to the patient and to family members. After completing the training, volunteers assist patients with interests such as writing letters, reading, playing board games, scrap booking, or may accompany a patient to a community event or to visit friends. Volunteers also assist by providing respite to family caregivers. Hospice volunteers are especially needed during the day, but time can be very flexible and work around work and travel commitments.

Hospice at HCS provides end of life care in Rindge and in towns throughout the Monadnock region. Care is provided in homes and in assisted living and nursing homes; volunteers are needed to offer support and companionship to patients and families in all settings. The training program takes place at Home Healthcare, Hospice and Community Services at 312 Marlboro Street in Keene. The program is free of charge. For more information, call Lorraine Bishop, Hospice at HCS Volunteer Coordinator at 532-8353 or lbishop@hcsservices.org.

Susan Ashworth is Director of Community Relations for Home Healthcare, Hospice and Community Services

## The Nurse is In

by Susan Ashworth

A wellness nurse from Home Healthcare, Hospice and Community Services will be available at the Ingalls Memorial Library on Monday, Sept. 20th from 1 p.m. to 2 p.m. Have your blood pressure checked and ask health questions. No appointment is necessary; the service is provided free of charge to residents of all ages. For more information contact Susan Ashworth at 352-2253 or 1-800-541-4145, or visit HCSServices.org.

Susan Ashworth is Director of Community Relations for Home Healthcare, Hospice and Community Services

## Turkeys for Veterans

The R.A.M.S. organization is pleased once again to offer Turkeys for Veterans on Veterans Day in recognition of their service. If you are a Rindge Veteran who would like a turkey, please call one of the numbers below and provide your; Name, address, phone number, branch of service and dates you served to request your Turkey. Turkeys will be delivered on Nov. 7. Thank You.

Keith Griffin: 899-2285

Felix DeGrandpre: 899-5157

Nick Freda: 899-5463 Tim Derr: 899-5044



## The Rindge Connection

The Rindge Connection is published bi-monthly except during the months of July and August by the Town of Rindge, Franklin Pierce University and the Rindge Chamber of Commerce. It is delivered free of charge by mail to Rindge postal customers and deliver it by e-mail to Chamber of Commerce members. Copies are available at selected locations in Rindge and on the Franklin Pierce University campus. Subscriptions are available for \$20 per year.

The opinions expressed in the Rindge Connection are those of the individual authors. They do not necessarily reflect the views of the Rindge Connection Advisory Committee or the publication's sponsoring organizations.

### Advisory Committee and Editorial Guidelines

The Advisory Committee will select and edit articles and ads for inclusion in the newsletter as well as oversee its publication. The Committee reserves the right to edit copy. It will reject any copy that expresses discrimination based on age, gender, disability, race, nationality, ancestry, creed, color or sexual orientation. The newsletter will not pay for articles.

### Advisory Committee

Patricia Garrity, Franklin Pierce University  
Sharon Strasser, Rindge Connection Coordinator  
Carlotta Lilback Pini, Town of Rindge  
Judy Tomlinson, Franklin Pierce University

### Graphic Designers

Lissa Simon '10, Alexandra Edwards '10 & Ryan E. Hulse '09, Franklin Pierce University

### To submit an article

E-mail in MS-Word or a .txt file to rindgenewsletter@yahoo.com. Article also may be copied into the body of an e-mail or put into the drop box at the Town Office, 30 Payson Hill Road. Photos should be in .jpg format and 300 dpi or more. Questions? Call (603) 899-5051.

### To place an advertisement

Call (603) 899-5051 or e-mail rindgenewsletter@yaoo.com

**Deadline is the 7<sup>th</sup> of the month preceding publication.**

## Rindge Chamber of Commerce Member News

by Bethany Paquin

*The Rindge Chamber of Commerce would like to remind everyone in the community to patronize the wonderful businesses in and around Rindge before shopping out of town. When we support our neighbors by shopping and doing business locally, everyone benefits!*

### **Breakfast Meeting**

On Wednesday, Sept. 15, Toah Nipi will host the first chamber breakfast of the season at their retreat center at 252 Old Ashburnham Road at 7:30 a.m. Breakfast costs \$8 per person. Please respond by Wednesday, Sept. 8 to attend this networking event. Please plan to join us for our Oct. 20 breakfast at 7:30 a.m. at Hidden Hills. The Jaffrey Rindge School District and Superintendent Jim O'Neil will address Chamber members. The Rindge Chamber has invited the Jaffrey Chamber to this joint breakfast. The cost for this event is \$10 per person. Please respond for either event by sending an e-mail to [info@rindgechamber.org](mailto:info@rindgechamber.org) or by calling 899-5051.

### **Business After Hours**

Timeless Home Consignments, LLC and new owner Annette Williams (see article, page 1) will host the first Business After Hours event of the season on Tuesday, Sept. 21 from 5:30 p.m. to 7 p.m. at 23 Main Street, Suite 1 in Jaffrey. Please join fellow chamber members for networking

and refreshments and see what is new at Timeless Home Consignments, LLC. On Wednesday, Oct. 7, Toah Nipi will host our October Business After Hours from 252 Old Ashburnham Road in Rindge from 5:30 p.m. to 7 p.m. Enjoy the foliage on your drive and join us for a refreshments and networking. Both events are free. Please respond by contacting the chamber at [info@rindgechamber.org](mailto:info@rindgechamber.org) or by calling 899-5051.

### **Money Card Raffle**

The chamber is hosting a raffle to raise funds for Chamber events and projects. The chamber will draw a card every day for 26 days, skipping Sundays, for money prizes ranging from \$10 to \$100 plus a mystery prize on Thanksgiving Day. Each money card costs \$5 and includes 26 chances to win. Please purchase money cards from any chamber board member or at GFA Federal Credit Union in Rindge.

### **Save the Date**

Please plan to join us for our Annual Dinner meeting on Saturday, Jan. 22, 2011 at Hidden Hills.

*Bethany Paquin is Interim Administrative Assistant for the Rindge Chamber of Commerce.*

For more information about becoming a member of the Rindge Chamber of Commerce, for information about any of our events or activities, to view past issues of the Rindge Connection or to apply for membership, please call the Chamber at 899-5051, send e-mail to [info@rindgechamber.org](mailto:info@rindgechamber.org) or visit the Chamber Web site at [www.rindgechamber.org](http://www.rindgechamber.org).

## Franklin Pierce University is looking for women pioneers

by Dr. Donna Decker



Dr. Donna Decker, Director of the Women in Leadership Program

Franklin Pierce University's Rindge campus is looking for women pioneers from the Rindge area to join its Women in Leadership Certificate Program this fall.

"We are becoming more user friendly this semester," says Dr. Donna Decker, Director of the program. "An advisory group of female leaders from the Rindge-Jaffrey-Peterborough area is guiding us in best practices, as we offer our 13-credit certificate to the community at large. Introduction to Women's Studies, for example, is being offered on Wednesdays from 6 p.m. to 8:30 p.m. to accommodate those with full daytime schedules. We are finally able to realize our long-term goal of community members studying alongside traditional Rindge students about issues important to women."

Program activities on campus include Take Back the Night, The Vagina Monologues, and workshops on negotiating skills, mothers

as artists, and assertiveness in the workplace. Past speakers who have addressed WL students include fashion designer Dana Buchman and the first female chief of the Cherokee nation Wilma Mankiller.

Rachel Carmody, a Creative Writing major at the Rindge campus and volunteer for Kitty Rescue and Pierce's Reality Check, is looking forward to studying leadership. "Women have been historically oppressed, yet they have made tremendous strides in many different areas."

It is such growth and the positive energy that brings Carmody, an Honors Program student, to the WL program where she wants to learn about why women writers "adopted male pseudonyms in order to have their work published" and why domestic violence and "ideal images" of women have such an inordinately negative impact on women. "Girls need to understand that they needn't starve themselves to attain a certain ideal," says Carmody, who is teaching acting to children aged 5 to 12 at a camp this summer.

"The Women in Leadership program is about redefining the boundaries for women. People interested in exploring the creative and effective ways in which women lead will find our offerings intellectually invigorating as well as hands-on practical in the workplace," says Decker.

For more information about Franklin Pierce's Women in Leadership Certificate program, see our Web site or e-mail [deckerd@franklinpierce.edu](mailto:deckerd@franklinpierce.edu).

## How important is a smile?



Deciding about braces is an important step, so you want advice and care you can trust. Helping people put their best smiles forward is our life's work—we're the region's smile specialists! Call for a free evaluation with Dr. Post: 899-3392

## Rindge Orthodontic Specialists



Our office is across 202 from Wal-Mart in Rindge, NH  
31 Sonja Drive • 603 899-3392  
[RindgeOrtho.com](http://RindgeOrtho.com)

## Rindge Historical Society Happenings

by Timothy Derr

**Summer's End** – Now that the summer is coming to an end and most schools have started back for the beginning of a new school year the members of the Rindge Historical Society are busy working on new events, exhibits, helping people conduct research and writing historical articles. If you haven't had a chance to see the current display at the Rindge Historical Society and Museum, there is still time. The exhibit is titled, "Rindge As A Destination: Hotels, Inns, Camps and Cottages." This exhibit features photos, post cards, and memorabilia from many of the Hotels, Inns and Camps that once stood and operated in Rindge. For those of you who want to see how Rindge once was, this exhibit is a must see.

Activity didn't slow down during the summer at the Rindge Historical Society as many members help visitors conduct research within the Rindge area. Members of the Bancroft family visited the Museum and discovered information on their family history and also found that one of three Bancroft houses is still standing, which they visited. A historical researcher from the Concord area who is writing a book on documenting Civil War plaques also visited the Museum where members not only showed him where some of the plaques were located in Rindge, but also showed him one that he didn't know existed. There was also a small group from Camp Constitution that was staying at Toah Nipi who visited the museum. One of the counselors is a direct descendent of Thomas Dudley and was a Royal Governor of Massachusetts. He was delighted to see a chair in the museum that used to belong to the Royal Governor.

**New Sign** – You will notice as you drive along School Street and pass the Rindge Historical Society's Building and Museum that there is a new sign in front of the building for the Rindge Historical Society. The sign is attached to the light pole in the front of the building. This sign was

donated to the Rindge Historical Society by the Rindge Athletic Men's Social Club, – RAMS who also installed the sign.

**The Barn Has Lights** – The barn located at the Rindge Historical Society is now out of the dark. During those days in fall and winter when it became dark early it was difficult to show the many historical items on display in the barn. Now, thanks to generous donations and volunteer time the RAMS had electrical service installed in the barn, which includes lights and outlets inside the barn as well as a light located outside above the barn's sliding door.

**German POWs in New Hampshire** – Did you know that approximately 250 German and Austrian prisoners of WWII were held in Stark, New Hampshire? The prison was known as Camp Stark and was a former Civilian Conservation Corps camp and New Hampshire's only WWII prisoner of war camp. The Rindge Historical Society will be offering a great event this Oct. 9, 2010 during the annual October fest in Rindge. This event is titled HELD ON THE HOMEFRONT. This event will feature a 40 ft. bus, which has been converted into a mobile classroom and museum, which will feature exhibits, display panels with illustrations, photographs, documents and artifacts on German WWII prisoners held in New Hampshire. It promises to be an exciting and fantastic historical exhibit that should not be missed. This mobile classroom will be located at the Rindge Historical Building located on School Street during the October Fest.

The Rindge Historical Society and Museum is located on School Street and is open every Wednesday morning from 10 a.m. to 2 p.m. or longer if visited and is opened the first Saturday of each month.

*Tim Derr is the current President of the Rindge Historical Society*

# Welcome Back Franklin P

## Programs for September - Rindge Recreation Department

### Office Hours:

Monday – Friday, 9 a.m. to 5 p.m.  
We may be out running errands or programs. Please be sure to utilize our night drop box outside the main door to the Wellington Community Center or call before coming down.  
Office Phone: 603-899-6847  
Web site: [www.town.rindge.nh.us](http://www.town.rindge.nh.us)

### Recreation Staff:

Craig C Fraley CPRP – Recreation Director  
Ethan Perry – Sports Coordinator  
Jean Kundert – Function Facilitator

### Trips

#### Fall foliage Railroad Ride

Leader: Craig Fraley  
Experience the magnificent views of the Green Mountains aboard the Green Mountain Railroad. We will depart from Bellows Falls VT and go to Chester Depot. After the railroad trip we will then head over to the Vermont Country Store for an unforgettable shopping experience.

Who: Anyone  
Where: Southern VT  
Departure: 9 a.m.  
Return: 4 p.m.  
When: Monday, Oct. 4  
Fee: \$35

#### A Day at the Big E

Leader: Craig Fraley  
New England's Autumn Tradition! Each September, over one million guests enjoy top name entertainment, The Big E Super Circus, the Avenue of States, Storrowton Village Museum, crafts, agricultural contests, rides, shopping and foods from around the world.  
**This trip involves a lot of walking. Please be sure to dress appropriately for the day.**

Who: Anyone  
When: Friday Sept. 24 (New Hampshire Day)  
Depart: 9 a.m.  
Return: 6 p.m.  
Fee: \$25 Residents, \$30 non-residents

#### Rindge vs. Peterborough

Outdoor Laser Tag competition.  
Leader: Craig Fraley  
Do you think you have what it takes? We need Rindge's finest to partake in this 1st and hopefully annual clash of the Titans. We will be driving up to The Strategy Zone in Goshen New Hampshire, for a day of Rindge vs. Peterborough laser tag combat. It's time to represent!!

Who: Grades 6 and up  
When: Oct. 8 (no school day)  
Departure: 8:30 a.m.  
Return: 4 p.m.  
Fee: \$30

#### Afterschool Program (ASP)

ASP Coordinators: TBD  
Is your child spending the afternoon home alone sitting in front of the TV? Why not

get them outside for some serious fun. Participants get bussed over to Wellington Park for an afternoon of fun, games and maybe a little homework too. Each Tuesday participants will go somewhere local for a short field trip. Examples are hiking, sledding, farming and any other creative place we can think of. Monday and Wednesday will be physical activity days. Kids should come dressed for some serious fun and games.

**Register for the Month, Week or individual days. Please go to [www.town.rindge.nh.us](http://www.town.rindge.nh.us) to download registration form.**

Who: RMS Students  
When: Monday through Friday from 3:30 p.m. to 5:30 p.m.  
Where: Wellington Park/Rindge Community Center  
Fee: \$8 per day, \$35 for the week or \$125 for the month  
Registration deadline is the Friday before the week you are attending.

#### No School Extravaganza

The teacher's have to go to school but you don't. Come to the Recreation Department for a day of adventures.

Who: Grades 1 – 5  
When: Oct. 8  
Where: Wellington Park  
Drop off – 8:30 a.m.  
Pick-up – 4:30 p.m.  
Fee: \$20 (includes pizza party)

#### Crotched Mountain Ski passes

The Rindge Recreation Department is now selling Crotched Mountain Ski passes at a discounted club price to Crotched Mountain Ski and Ride. These passes are for the 2010-2011 season. Save big by purchasing with the RRD.

**(SEE INSERT "A" FOR PRICING INFORMATION)**

#### Thursday Night Lights – Crotched Mountain Ski Program

Leader: Craig Fraley  
There is nothing like getting out of school and heading to the mountain for an afternoon/evening of skiing. Students will be picked up from both JRMS and RMS and driven to Crotched Mountain. Students will have the opportunity to rent equipment, take a lesson and have some free skiing time before heading home to Wellington Park for 8pm. Parents can also pick their children up at Crotched Mountain at any time.

Who: Grades 1-8  
When: Thursdays, 1/13-2/10 (2/17 make up date)  
Where: Crotched Mountain Ski and Ride  
Time: Students return to Wellington Park by 8 p.m.  
Lift only: \$110  
Lift and Lesson: \$160  
Lift, Lesson and Rental: \$210

Program information packets will be available to registered participants.  
e-mail – [cfraley@town.rindge.nh.us](mailto:cfraley@town.rindge.nh.us) to purchase your pass online using a credit card.  
**Registration Deadline: Oct. 11, 2010**

### Activities for the Seasoned Citizen

#### Morning Coffee

Coordinator: RRD Staff  
Sit down with fellow community members for great conversation and a cup of coffee.  
Who: Rindge Residents  
When: Every Wednesday Morning  
Where: Rindge Community Center at Wellington Park  
Time: 9 a.m. to 10 a.m.  
Fee: Free Program

#### Board Games Galore

Nothing beats a morning with friends playing a variety of games. If you have a game you love...bring it... or let us know so we can purchase it.

Who: Anyone  
When: Every Wednesday Morning Starting Oct. 6  
Where: Rindge Community Center at Wellington Park  
Time: 10 a.m. to noon  
Fee: \$2 (covers coffee and board games boards)

#### The Lunch Mobile

Leader: Craig Fraley  
Discover the diners of New Hampshire and Vermont. This monthly trip will pick go to a different diner within an hour and a half drive from the RRD in the Recreation van. We will choose diners where meals can be purchased for under \$10. We will also allow time after lunch to explore the area.

Who: Rindge Residents  
Where:  
Monday, Sept. 27– Lindy's Diner, Keene – Depart 10:30 a.m.  
Monday, Oct. 25 – Chelsea Royal Diner, Brattleboro, Vt – Depart 9:45 a.m.  
Monday, Nov. 15 – Black Water Junction, Andover, N.H. – Depart 9:30 a.m.  
Fee: \$5 for transportation (lunch is on you)  
Prior Registration is required

#### Zumba

Instructor: Lisa Laprade  
As Women's World Magazine says, "Burn 500 calories an hour with The Hot New Workout –Zumba!" Zumba is a cardio-based workout with sculpting exercises designed to tone the entire body from top to bottom. Zumba is fun, which motivates class participants to adhere to the program, even after they get the results they desire.

Who: Adults 18 and up  
When: Tuesdays  
Time: 6:00 p.m. to 7:00 p.m.  
Session 4: 9/7 – 10/12  
Session 5: 10/19 – 11/23  
Where: Wellington Park Recreation Building  
Fee: \$35 Residents, \$45 Non-Residents  
Walk In: \$6 Residents \$8 Non-Residents

#### Pre-School Program

The RRD is looking to start a Pre-School program on Friday mornings starting in Mid September. We are wondering who would utilize this program. It would be a month to month program with a very nominal fee of \$5 per session. This would help to pay for program materials. If you are interested please e-mail [cfraley@town.rindge.nh.us](mailto:cfraley@town.rindge.nh.us) so we can see if this is a feasible program.

#### We are a Wi-fi hot spot

The Rindge Community Center has wireless Internet on during open hours. If you need to get out of the house, or you only have dial-up connections at your home, come down to the Rindge Community Center for high speed.

**This is a public building for Rindge residents. Please use it!**

#### The Recreation Building

The Rindge Community Center at Wellington Park has many different uses. If you are looking for somewhere to host your next birthday party, reunion, bridal or baby shower, or civic meeting, think about hosting it at the Rindge Community Center. This building was built by many hands and we want many hands to enjoy it's amenities. We have a full kitchen and can seat up to one hundred people. Please go to [www.town.rindge.nh.us](http://www.town.rindge.nh.us) for more information on rates and guidelines.

#### How to Register for a Program:

Drop Off: Completed registration form and payment may be dropped off at any time during the RRD operating hours or after hours may be dropped in the mail slot next to the main entrance to the Rindge Community Center.

**Mail:** Mail completed registration form and payment by check or money order (sorry no credit card) to:  
Rindge Recreation Department  
PO Box 163  
Rindge NH 03461

Phone registrations are not accepted without form of payment, because every program requires full payment and a signed registration form in order to be processed.

### Insert "A" - Pricing for Crotched Mountain

Pass Type	Age	Before 10/11	After 10/11
Junior Club Season Pass	6-18	\$299	\$349
Adult Club Season pass	19 and up	\$349	\$449
Midweek Pass	6 and up	\$249	\$349
5 and under	5 and under	\$50	\$50
Blue Skies at Night (3-9p.m.)	6 and up	\$279	\$379
Midnight Madness add on	6 and up	\$79	\$79

e-mail – [cfraley@town.rindge.nh.us](mailto:cfraley@town.rindge.nh.us) to purchase your pass online using a credit card.  
**Registration Deadline: Oct. 11, 2010**

### Franklin Pierce's Adventure Recreation Program Now Renting:

<b>Camping Equipment</b>	Equipment available to Students-Faculty-Staff-Community
<b>Camp stoves</b>	
<b>Tents</b>	
<b>Sleeping Bags/Sleeping Pads</b>	In order to rent out equipment, you must make an appointment with a member of the Adventure Recreation staff. Contact
<b>Headlamps(Camping stoves, sleeping bags, pots, headlamps, etc.)</b>	Number: 603-899-4383 or
<b>Backpacks</b>	<a href="mailto:cartyd@franklinpierce.edu">cartyd@franklinpierce.edu</a>
<b>Snow Shoes</b>	
<b>Kayak/Canoe dry-bags</b>	

## The Sugar and Spice Boutique

by Cynthia Tommila and Sharon Strasser



Formerly known as the Itinerant Peddler, the Sugar and Spice Boutique, situated at the crossroads of Routes 119 and 12 in Fitzwilliam, still offers wonderful consignment...and then some!

New owner Cynthia Tommila has worked hard at making the new boutique a warm environment with much to offer. With a large family of her own, Cynthia knows how helpful consignment can be. "It was my way of helping to cut costs down. With six children and being a stay at home mom, I found Consignment a great way to go!" With that said, she has ventured into the business world herself, with the hopes of having a shoppe that offers, "a little something for everyone."

One way of doing this, she says, is through her many "wonderful renters, who help bring a great range of items to choose from: from jewelry to china, to wall décor to clothes, to platters and tablecloths, to books and quilts and handmade purses and aprons: all of the above make Sugar and Spice unique and enjoyable. And because the renters always change it up, it's always a new store!"

Another reason Cynthia wanted to bring in new items is because, "living in Fitzwilliam, you have to travel to Keene or further to grab a last minute item or gift." In this way, Cynthia is pleased to offer an alternative to Fitzwilliam residents.

The Sugar and Spice Boutique also offers primitive décor, inspirational gifts, and buttered maple reed diffusers, the last of which "seems to be becoming a trademark for the store, as the wonderful aroma greets you upon arrival," says Tommila.

In addition, the Sugar and Spice Boutique has a newly renovated Children's Boutique downstairs. Customers can find everything from new baby or shower gifts, to back to school clothes, which range in sizes from newborn to Jr.s. "With the option of new or Consigned, you get to decide how much you want to spend." "Sugar and Spice also offers name brands one would normally have to travel to get. For the little ones there is Carter's, Gymboree, GAP, and Janie and Jack. For school age: Nike, GAP and Aeropostale; and for Jr. High and High School: Hollister and Abercrombie," Tommila states.

Also featuring infant bouncy seats, boppys, strollers and portable cribs, the Sugar and Spice Boutique is a, "must see for yourself kind of place. Come in and leave a little extra time to go around twice. There is a lot to see! It truly is, as the name says, 'Sugar and Spice and Everything Nice'...delightful!"

### HOURS OF OPERATION:

Tues.-Sat. 10am-5pm

## Ingalls Memorial Library Children's Programs

by Georgianna Connor

Starting Monday Sept. 13, 2010

Story time Mondays at 10:30 a.m. or come to a repeated program on Wednesdays at 10:30 a.m. Ages: 3-5, Story and craft

Homeschooler's program

Second Friday of the month starting Sept. 10, 2010 at 2 p.m. Each month will have a different theme, activity or speaker. Ages: preschool and up.

Girl's book club; Grades 4 and 5

Second Wednesday of the month starting Sept. 8, 2010 at 3:15 p.m.  
Book discussion and craft.

Girl's book club Grades 6th-8th

Third Wednesday of the month starting Sept. 15, 2010 at 3:00 p.m.  
Book discussion and craft.

Boy's book club Grades 4th- 8th

First Friday of the month starting Sept. 3, 2010 at 3:15 p.m.  
Book discussion and activity

Lego Club for boys

Fourth Wednesday of the month starting Sept. 22, 2010 at 3:15 p.m.  
Come and build with Lego blocks. Ages: 5 and up.

*For more information or to register for any of these programs please call 899-3303*

*Georgianna Connor is the Children's Librarian for the Ingalls Memorial Library in Rindge, NH*

## Pierce Pride Kickoff

Saturday Sept. 4

Women's Soccer vs. Felician @ 4 p.m.  
Men's Soccer vs. Molloy @ 7 p.m.



Join us at the NEW Rocky the Raven is unveiled and plenty of fun and games.

The evening concludes with fireworks courtesy of Atlas Pyrotechnics

## Now Accepting Patients

*Allow Us to Help You Create Your Signature Smile*



*Gentle Dental Care for the Whole Family*

**Signature Smiles Dental**

Jennifer A Charland, DMD

31 Sonja Drive Suite 3

Rindge, NH

(603) 899-2422

[www.signaturesmilesth.com](http://www.signaturesmilesth.com)

*Call TODAY for Appointments*

*Most Insurance Accepted*

*Financing Option*

*Evening Appointments Available*

*Nitrous Oxide Available*

*Cosmetic Dentistry*

*Metal-Free Fillings*

*Single Visit Crowns & Onlays*

# CCNH President's Community Partner Award

By Marabeth Farmer



Creating Positive Change (CPC) focuses resources to build community, strengthen families, encourage healthy behavior and reduce the use of alcohol, tobacco and

other drugs by high school aged teens. To this end, all CPC programs serve teens and families through information and outreach in Antrim, Bennington, Dublin, Francetown, Greenfield, Hancock, Jaffrey, Peterborough, Rindge, Sharon, Temple, Greenville and New Ipswich.

CPC is a vital member of a variety of networks in N.H. Their partnerships include recreation departments, law enforcement agencies, human service and civic organizations, medical professionals, youth advocacy groups and Franklin Pierce University.

In early 2009, with her pulse on community issues, Sam LaFortune, Executive Director of CPC, approached officials from Rindge and Pierce to offer an option, a unique plan, to help resolve the growing town and gown issues. It seemed important to develop a healthier, sustainable relationship between the two entities. She secured a grant from the state to hire a consultant to facilitate discussions. Both the town and university created teams of four to six people; the teams began meeting with a facilitator in April and continue to meet to discuss issues that impact both the town and university.

To quote, University President, Dr. Jaime Birge, "Rather than allowing the tension around difficult issues to define our town and gown relationship, I hope we can begin to rely upon a good town and gown relationship to define our issues."

The Pierce and Rindge communities congratulate and thank Sam LaFortune and Creating Positive Change for taking the initiative to facilitate open communication to create a bond between the University and the town.

# BUSINESS DIRECTORY

To Place An Advertisement  
Call (603) 889-5051 or  
email: rindgenewsletter@yahoo.com

## HOLMAN LANDSCAPE MATERIALS

Mulches, Loam, Sands, Gravels, Stones & Compost  
Garages, Sheds, Barns, Playsets, Gazebos

Loam  
Special!

14 yards delivered to Troy/Fitzwilliam \$225  
All other deliveries within 20 miles \$270

590 Rt. 12 on the MA/NH State Line  
Fitzwilliam, NH

PICKUP OR SCHEDULE A DELIVERY  
CALL (603) 585-9600 OR (603) 242-3660



Candice Starrett  
REAL ESTATE LLC



PRICE REDUCED! SECLUDED  
GARRISON ON 6.5 ACRES.

4BD, 2BA, deck to private backyard. Formal dining room, master bath, eat-in kitchen, new appliances, 1st floor laundry, Generator hookup. Pride of ownership. Just move in.

Rindge \$192,000

PUT OUR EXPERIENCE TO WORK FOR YOU  
CALL CANDICE STARETT REAL ESTATE, LLC - 899-5552  
NH & MA Brokers + Web: www.candicestarett.com  
Email: cstar@candicestarett.com

We designed & printed THIS newsletter  
We can do the same for you!



Business Cards • Letterhead  
Envelopes • Brochures  
Postcards • Catalogs  
Newsletters • Flyers • Banners  
Promotional Marketing Products  
Pick Up & Delivery  
Full Design & Mail Services

o & f: 603.672.7599

263 Union Square #4 • Milford, NH 03055  
www.hansenprint.com • info@hansenprint.com

## 401(k) Rollovers Made Easy



Robert Martin  
Financial Services Representative  
29 Commercial Lane, Suite 1, Rindge NH 03461  
rmartin3@metlife.com  
robertgmartin.com



Call Robert today at 603-899-2425.  
For the if in life.®

MetLife

Metropolitan Life Insurance Company, 200 Park Avenue, New York, NY 10166. Securities products offered through MetLife Securities Inc., (FINRA/SIPC), 1095 Avenue of the Americas, New York, NY 10036. A MetLife company. L0909058822[exp0910][All States][DC] 0709-5871 ©UFS

Phone: (603) 899-5184

Fax: (603) 899-5017

Kitchen & Vanity Cabinets, Countertops, Granite, Laminate, Hardwood, Tile

Mountain View  
KITCHENS LLC

PO Box 408 • 1032 Route 119 • Rindge, NH 03461

info@mtviewkitchens.com

www.mtviewkitchens.com

Pizza  
Haven  
Pizza With Attitude!

- Pizza • Grinders
- Fried Foods
- And Much More!

Route 119  
Rindge, NH 03461  
603.899.2828  
603.899.2869

HOURS:  
Mon.-Thurs. 11am-10pm  
Fri. & Sat. 11am-11pm  
Sun. 12-10pm

\$2.00 Off Any Order Over \$10.00 With This Ad!

Beverages \* Ice \* Snacks  
Milk \* Groceries \* Bread  
Newspapers \* Lottery \* Copier  
Tobacco \* ATM \* Phone Cards

Gasoline \* Motor Oil  
Diesel \* Kerosene  
Grill Gas Exchange

FOGG'S MINI-MART

ROUTES 119 & 202 - RINDGE, NH - (603) 899-3355

Coffee & Donuts

Sandwiches & Salads

MONADNOCK  
DENTAL ASSOCIATES, P.C.

Zane T. Broome, D.D.S. • William E. Brooks, D.D.S.

## Your Dental Health

### Shared Concerns

Parents may want to take note of the fact that they can pass along cavity-causing bacteria to their babies. This information is provided in the interest of raising awareness, not causing alarm. What many people do not know is that Streptococcus mutans is a bacterium that can be transferred by saliva when utensils are shared and even when parents kiss their babies. It's important to note that only parents and caregivers with active tooth decay can spread Streptococcus mutans bacteria when saliva is transferred. Beyond that, tooth decay develops as a result of a combination of factors, including genetics, oral hygiene, and exposure to sugary liquids. Good oral health on the part of parents helps minimize the bacteria-transfer factor.

Streptococcus mutans is one of the leading causes of dental caries (tooth decay). At MONADNOCK DENTAL ASSOCIATES, we use technology to help you understand all your dental options, so you can make more informed choices about your own needs. We stress the importance of preventive dental care for the entire family. When was the last time you had your teeth checked by a professional? Call us now at 603-532-8720 and schedule an appointment. We will do what is best for you and we will not compromise. We're located at 123 Main St., Jaffrey. Our team of dedicated staff has been providing quality family dental care since 1979.

P.S. Babies are particularly vulnerable to tooth decay during the time of tooth eruption, when their tooth enamel is relatively soft.

Ask our staff how to become part of our **Whitening For Life Team**  
[www.monadnockdental.com](http://www.monadnockdental.com)

# SEPTEMBER & OCTOBER CALENDAR OF EVENTS

## SEPTEMBER

- 2 -** Franklin Pierce Men's Soccer vs. C.W. Post; Sodexo Field; 7 p.m.
- 3 -** Franklin Pierce Women's Soccer vs. Queens (NY); Sodexo Field; 6 p.m.
- 4 -** Pierce Pride Kickoff; Sodexo Field; 4 p.m. - 9 p.m.  
Franklin Pierce Women's Soccer vs. Felician; Sodexo Field; 4 p.m.  
Franklin Pierce Men's Soccer vs. Molloy; Sodexo Field; 7 p.m.
- 8 -** Franklin Pierce Field Hockey vs. Merrimack; Sodexo Field; 6 p.m. - 8 p.m.  
Board of Selectmen Meeting; Town Offices; 6 p.m.
- 9 -** Rindge Woman's Club; Meetinghouse; 7pm; All Rindge women invited
- 10 -** Franklin Pierce Women's Soccer vs. New Haven; Sodexo Field; 6 p.m.
- 12 -** Franklin Pierce Field Hockey vs. C.W. Post; Sodexo Field; 12 p.m. - 2 p.m.
- 14 -** Franklin Pierce Volleyball vs. Assumption; Fieldhouse; 7 p.m. - 9 p.m.
- 15 -** Rindge Chamber Breakfast; Toah Nipi, 252 Old Ashburnham Road, Rindge; 7:30 a.m.; \$8 per person  
Franklin Pierce Women's Soccer vs. Saint Michaels; Sodexo Field; 7 p.m.
- 18 -** Franklin Pierce Field Hockey vs. Stonehill; Sodexo Field; 1 p.m. - 3 p.m.
- 20 -** Wellness nurse available; Ingalls Memorial Library ;1:00-2:00 p.m.; free and open to public; Contact Susan Ashworth at 352-2253, 1-800-541-4145, or visit HCSservices.org
- 21 -** Rindge Chamber Business After Hours; Timeless Home Consignments, 23 Main Street, Suite 1, Jaffrey; 5:30 p.m. to 7 p.m.; free
- 22 -** Franklin Pierce Men's Soccer vs. LeMoyne; Sodexo Field; 4 p.m.  
Franklin Pierce Volleyball vs. Saint Michael's; Fieldhouse; 7 p.m. - 9 p.m.  
Board of Selectmen Meeting; Town Offices; 6 p.m.
- 24 -** A day at the Big E; 9am -6pm; Fee: \$25 Residents, \$30 non-residents; Contact Craig Fraley for more information
- 25 -** Franklin Pierce Women's Tennis vs. Bentley; noon  
Men's Tennis vs. Bentley; 3 p.m.  
Mile Long Buffet – Advent Lutheran Church –Rt. 202 Rindge (near Jaffrey border) 4:30-6:30 pm, \$8 adults, \$4 children, \$7 Seniors, (families \$25 max)
- 26 -** Franklin Pierce Women's Soccer vs. Assumption; Sodexo Field; 1 p.m.  
Franklin Pierce Men's Soccer vs. Merrimack; Sodexo Field; 4 p.m.
- 28 -** Franklin Pierce Field Hockey vs. Saint Anselm; Sodexo Field; 7 p.m. - 9 p.m.
- 29 -** Franklin Pierce Women's Tennis vs. Stonehill; 3 p.m.

## OCTOBER

- 2 -** Franklin Pierce Field Hockey vs. American International; Sodexo Field; 1 p.m. - 3 p.m.  
Franklin Pierce Women's Soccer vs. UMass-Lowell; Sodexo Field; 4 p.m.  
Men's Soccer vs. Southern Connecticut State; Sodexo Field; 7 p.m.  
Franklin Pierce Volleyball vs. Southern Connecticut State; Fieldhouse; 7 p.m. - 9 p.m.
- 3 -** Franklin Pierce Women's Tennis vs. Saint Rose; Tennis Courts; 2 p.m. - 5 p.m.
- 4 -** Fall foliage Railroad Ride; Southern VT.; 9 a.m-4 p.m.; Fee \$35; contact Craig Fraley for more information
- 5 -** Franklin Pierce Men's Soccer vs. American International; Sodexo Field; 7 p.m.
- 6 -** Board of Selectmen Meeting; Town Offices; 6 p.m.
- 7 -** Rindge Chamber After Hours; Toah Nipi, 252 Old Ashburnham Road, Rindge; 5:30 p.m. to 7 p.m.; free
- 9 -** Franklin Pierce Men's Tennis vs. Assumption; Tennis Courts; 11 a.m. - 2 p.m.  
Women's Tennis vs. Assumption; Tennis Courts; 2 p.m. - 5 p.m.  
Franklin Pierce Field Hockey vs. Bentley; Sodexo Field; 1 p.m. - 3 p.m.
- 10 -** Franklin Pierce Men's Tennis vs. Le Moyne; Tennis Courts; 11 a.m. - 2 p.m.  
Franklin Pierce Women's Soccer vs. Pace; Sodexo Field; 1 p.m.
- 11 -** Franklin Pierce Men's Tennis vs. Southern New Hampshire; Tennis Courts; 11 a.m. - 2 p.m.
- 12 -** Franklin Pierce Men's Soccer vs. Bentley; Sodexo Field; 7 p.m.
- 13 -** Franklin Pierce Volleyball vs. UMass Lowell; Fieldhouse; 7 p.m. - 9 p.m.
- 19 -** Franklin Pierce Women's Soccer vs. Stonehill; Sodexo Field; 4 p.m.
- 20 -** Board of Selectmen Meeting; Town Offices; 6 p.m.  
Joint Chamber Breakfast hosted by Jaffrey Rindge School District; Hidden Hills; 7:30 a.m.; \$10 per person  
Franklin Pierce Men's Soccer vs. Saint Anselm; Sodexo Field; 7 p.m.  
Franklin Pierce Volleyball vs. Stonehill; Fieldhouse; 7 p.m. - 9 p.m.
- 23 -** Franklin Pierce Women's Soccer vs. Saint Rose; Sodexo Field; noon  
Franklin Pierce Field Hockey vs. Adelphi; Sodexo Field; 1 p.m. - 3 p.m.
- 26 -** Franklin Pierce Men's Soccer vs. Southern New Hampshire; Sodexo Field; 7 p.m.
- 27 -** Franklin Pierce Volleyball vs. American International; Fieldhouse; 7 p.m. - 9 p.m.

### Regular Monthly Meetings

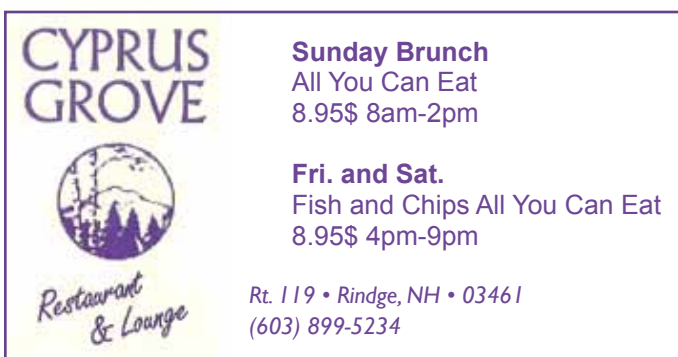
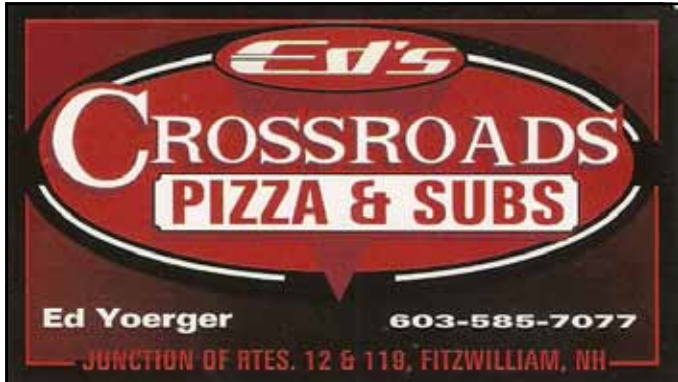
Day of Month	Name of Meeting	Description	Location	Time
1st Monday	Recreation Committee Meeting	Monthly Meeting	Rec Building, Wellington Road	5:30 p.m.
1st Wednesday	Chamber of Commerce Board Meeting	Monthly Board Meeting	Town Offices, 30 Payson Hill Road	7:30 a.m.
1st Friday	Economic Development Committee	Monthly Meeting	Town Offices, 30 Payson Hill Road	8:00 a.m.
Every Other Wednesday	Board of Selectman	Monthly Meeting	Town Offices, 30 Payson Hill Road	6:00 p.m.
1st & 3rd Tuesday	Planning Board	Bi-monthly Meeting	Town Offices, 30 Payson Hill Road	7:00 p.m.
4th Tuesday	Zoning Board of Adjustment	Monthly Meeting	Town Offices, 30 Payson Hill Road	7:00 p.m.
1st & 3rd Thursday	Roadway Committee	Monthly Meeting	Town Offices, 30 Payson Hill Road	12:30 p.m.
2nd Monday & 4th Thursday	Conservation Commission	Bi-monthly Meeting	Town Offices, 30 Payson Hill Road	7:00 p.m.
2nd Tuesday	Emergency Operations Planning	Monthly Meeting	Town Offices, 30 Payson Hill Road	10:00 a.m.
2nd Wednesday	Library Trustees	Monthly Meeting	Ingalls Memorial Library	5:30 p.m.
2nd Thursday	Joint Loss Management (Safety) Committee	Monthly Meeting	Town Offices, 30 Payson Hill Road	12:30 p.m.
1st Saturday	Historical Society Museum open	Monthly	24 School Street	10 a.m. to 2 p.m.
Every Wednesday	Historical Society Museum open	Weekly	24 School Street	10 a.m. to Noon
Every Tuesday	Weight Watchers	Weekly	Recreation Building, Wellington Road	4:30 p.m.
Every Wednesday	Senior Coffee Hour	Weekly	Recreation Building, Wellington Road	9:00 to 10:00 a.m.

Web sites for more event information:

[www.franklinpierce.edu](http://www.franklinpierce.edu) • [www.town.rindge.nh.us](http://www.town.rindge.nh.us) • [www.rindgechamber.org](http://www.rindgechamber.org) • [www.sau47.k12.nh.us](http://www.sau47.k12.nh.us) • [www.cathedralofthepines.org](http://www.cathedralofthepines.org)

## Calendar Submissions and Clarifications

Please submit information on upcoming events that are open to the public and of interest to the general public by the 7th of the month preceding publication. Include date and day of the week, event, time, location, sponsoring organization, cost (if applicable) and contact information. Send to [rindgenewsletter@yahoo.com](mailto:rindgenewsletter@yahoo.com) or call (603) 899-5051. All meetings are subject to change or cancellation. Please call ahead to verify the schedule.



## Town Survey by Jane Pitt

In the next few days, you will receive a Survey from the Town of Rindge. The Survey asks for your opinions and suggestions regarding Rindge's future economic development. The results will be used to chart Rindge's future. The Survey also contains questions regarding HIGH SPEED INTERNET SERVICE. The information you provide will help us identify un-served and underserved areas in Rindge which may be eligible for high speed service through the recently awarded federal grant for Broadband development in New Hampshire.

When you get the Survey, please take a few minutes to complete it and return it to us by September 24th. Thanks.

Jane Pitt, is Director of Planning for the town of Rindge

# Thank you for Memorial Day contributions

by Eric DuBois and Pat Martin



Photo Credit/Ryan E. Hulse

On behalf of the Rindge Veteran's Association and the Memorial Day Committee, we would like to extend our heartfelt thanks to all the individuals, organizations and businesses who donated and volunteered to make our Memorial Day such a memorable event for veterans and their families.

Thanks to Hannaford's generosity, over 300 people enjoyed a picnic on the Common. The Rindge Woman's Club did all the cooking and preparing for the picnic and provided baked goodies for dessert. We could not manage without their very capable help every year.

Thanks to P.O.O.R for donating the funds to rent a "Ring the Bell with a Hammer" carnival game for the kids to enjoy during the picnic. There was a line the whole time with the bell going off every few minutes. The kids really

enjoyed it. Thank you to the volunteers from Destination Imagination for supervising the games on the Common for us.

We are very grateful to the Rindge Fire Department for marching with us, providing emergency support, contributing to the fireworks fund and especially for hosting a terrific breakfast that morning.

Thank you, Skip Marsh, for planning and logistics for the parade and keeping us all safe for another year!

Thanks to WalMart for donating a gift card used to purchase prizes for the games and water for the volunteers and marchers.

The RVA is grateful to the young veterans who marched with the RVA and made them

look good; Jeff Seppala, Clayton Olin, Craig Clark, Mark Griffin and Lucas Hansen.

Thank you to the 237th Military Police New Hampshire National Guard for supporting our parade with vehicles. The kids really got a kick out of them!

It is great to see our young veterans and those still being deployed. It gives us a chance to thank them for their service and to let them know they are in our thoughts and prayers.

Thank you, Reverend Hakala and Reverend Forry for delivering the prayers at the memorials throughout the town.

Anna Ciglar did an amazing job as bagpiper for the parade. We are so grateful that she was willing to accompany us throughout our visits to the memorials.

Thank you to the Town of Rindge and the Board of Selectmen for supporting the day's events, marching with us, and especially to Burt Goodrich, for being our featured speaker at the Veteran's Memorial Park.

Thanks to Deb Rainey and the Rindge Memorial School Chorus, and Jenny Aho and the Heritage Christian School for the wonderful musical entertainment they provided all afternoon. Thank you also to Chris Holman for providing CJ the DJ services for us.

The Rindge Rails to Trails, Neighbors Give, Rindge Chamber of Commerce, Rindge Athletic Men's (RAMS) Club and Monadnock Women provided essential support and donations right from the planning stages of Memorial Day.

Keith and Brenda Griffin and Tammy DuBois

really made the Memorial Day "engine" run. The Memorial Day Committee cannot thank them enough for all their incredible support. Thanks to Savron Graphics for generously working with the RVA to modify and redo the parade programs.

Thanks to Scott Boudreau of Boudreau Tool and Die for providing placard mounting rods for the flags used to decorate our veterans graves.

Many people have remarked on the spectacular fireworks display that evening. We have Girl Scout Troop 12201's Riley Drew and Brandi Pugh to thank for that. They raised over \$1300 towards the fireworks display and Atlas Pyrovision Productions matched every dollar they raised and then some! Marie Pugh has done a wonderful thing in showing the girls what can be accomplished when you put your heart into something...those two eleven year old girls are a lesson for all of us.

Thank you to the Rindge Historical Society for opening the Historical Museum for visitors throughout the day and for finding so many pictures of Memorial Day in Rindge from years gone by.

Thanks also to the Friends of the Library for holding a book sale to benefit future 4th of July and Memorial Day events for the town.

Finally, thank you to all the residents and friends of Rindge who made Memorial Day 2010 such a special one.

Erick DuBois served as chairman of Rindge Memorial Day 2010 Committee. Pat Martin served as assistant chair.

## Monadnock Community Hospital

### Rindge Family Practice Offers Medical Care for All Ages

**A**s a new satellite of Monadnock Community Hospital, Rindge Family Practice is staffed by Dr. Beth Cooley and offers complete medical care for all ages...from the very young to the elderly.

Prior to joining the new Rindge practice, Dr. Cooley was a family care physician in the Monadnock Family Care practice at MCH.

- Graduate of University of Vermont College of Medicine
- Residency at University of Minnesota's Riverside University Family Practice
- Practiced Family Medicine at Weeks Medical Center in Lancaster, NH for ten years

The Rindge Family Practice is now accepting new patients. For more information about this new practice, please call 603-899-9563 to set up an appointment.

Monday thru Friday  
8:30 am – 5:00 pm  
Same day appointments  
are available.

Monadnock Community Hospital is a not-for-profit health care provider offering comprehensive health care services to the Monadnock Region. Financial Assistance information is available upon request.



Rindge Family Practice  
Phase Ten Professional Building  
31 Sonja Drive, Suite #2  
Rindge, NH

603-899-9563

(beside Dunkin Donuts  
and across from Hannafords  
on Rte. 202)

## Aging with Grace and Dignity – Slow Medicine: An Evening with Dr. Dennis McCullough

by Susan Ashworth

Home Healthcare, Hospice and Community Services (HCS) will host an evening with Dr. Dennis McCullough on Tuesday, October 5, at 6:00pm at the Peterborough Town House. Dr. McCullough's topic will be "Aging with Grace and Dignity – Slow Medicine."

Dennis McCullough, M.D., has been an "in-the-trenches" family physician and geriatrician for over 30 years. He is a graduate of Harvard College and Harvard Medical School, and trained in the Department of Family Medicine at the University of Western Ontario. He has served as a long-time faculty member in the Department of Community and Family Medicine at Dartmouth Medical School in Hanover NH.

The New York Times has credited Dr. McCullough with creating the term "Slow Medicine" to describe a new approach for improved quality eldercare. His book, *My Mother, Your Mother: Embracing "Slow Medicine", the Compassionate Approach to Caring for Your Aging Loved Ones* (HarperCollins, 2008) lays out the humane complement to the world of American High-Tech "Fast" Medicine. Dr. McCullough's goal is to create conversations among elders, families and health care professionals about how we can approach this "Fourth Age of Life". Slow Medicine has been met with widespread interest in Aging in Place / Aging in Community groups, retirement and assisted living communities, churches, chronic care support groups, hospitals, nursing homes, hospices, and professional groups of doctors, nurses, social workers, geriatric care managers and other professionals involved with the care of elders. He has lectured widely in the U.S., and also in Canada, Mexico, and Asia. His work has gained coverage by radio, TV and print media throughout the world.

*Dr. McCullough's talk is free and open to the public. His books will be available after the presentation. Home Healthcare, Hospice and Community Services, a United Way agency, provides services throughout the Monadnock region that assist people of all ages to stay independent at home. For information about the lecture or services, contact Lynn Robbins, Community Liaison at the Peterborough Office of HCS at 532-8353.*

*Susan Ashworth is Director of Community Relations for Home Healthcare, Hospice and Community Services*